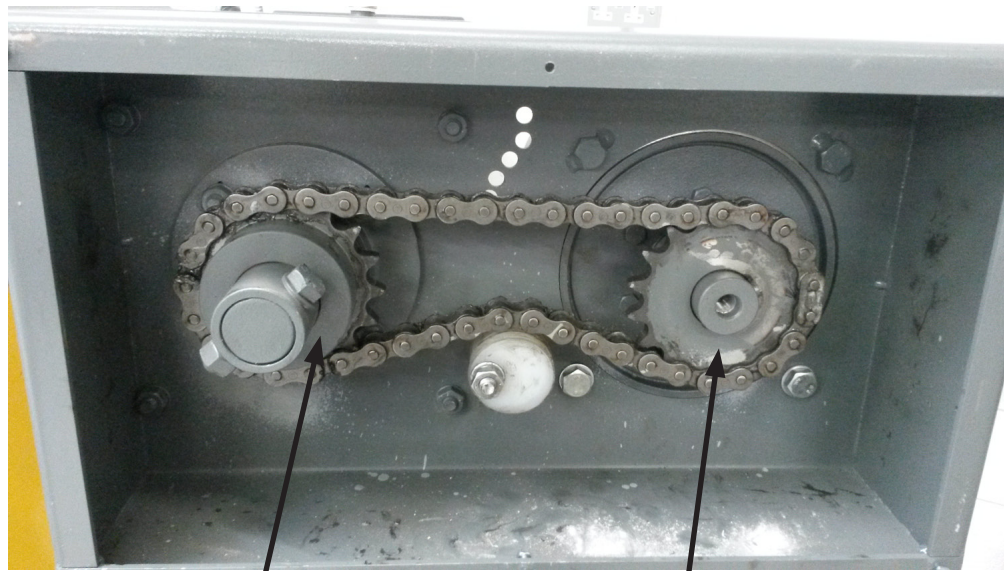


Product Bulletin/Edition	PB108/A
Department/Product/Fuel	HDG/FRA PSZ
Date Month/Year	04/19



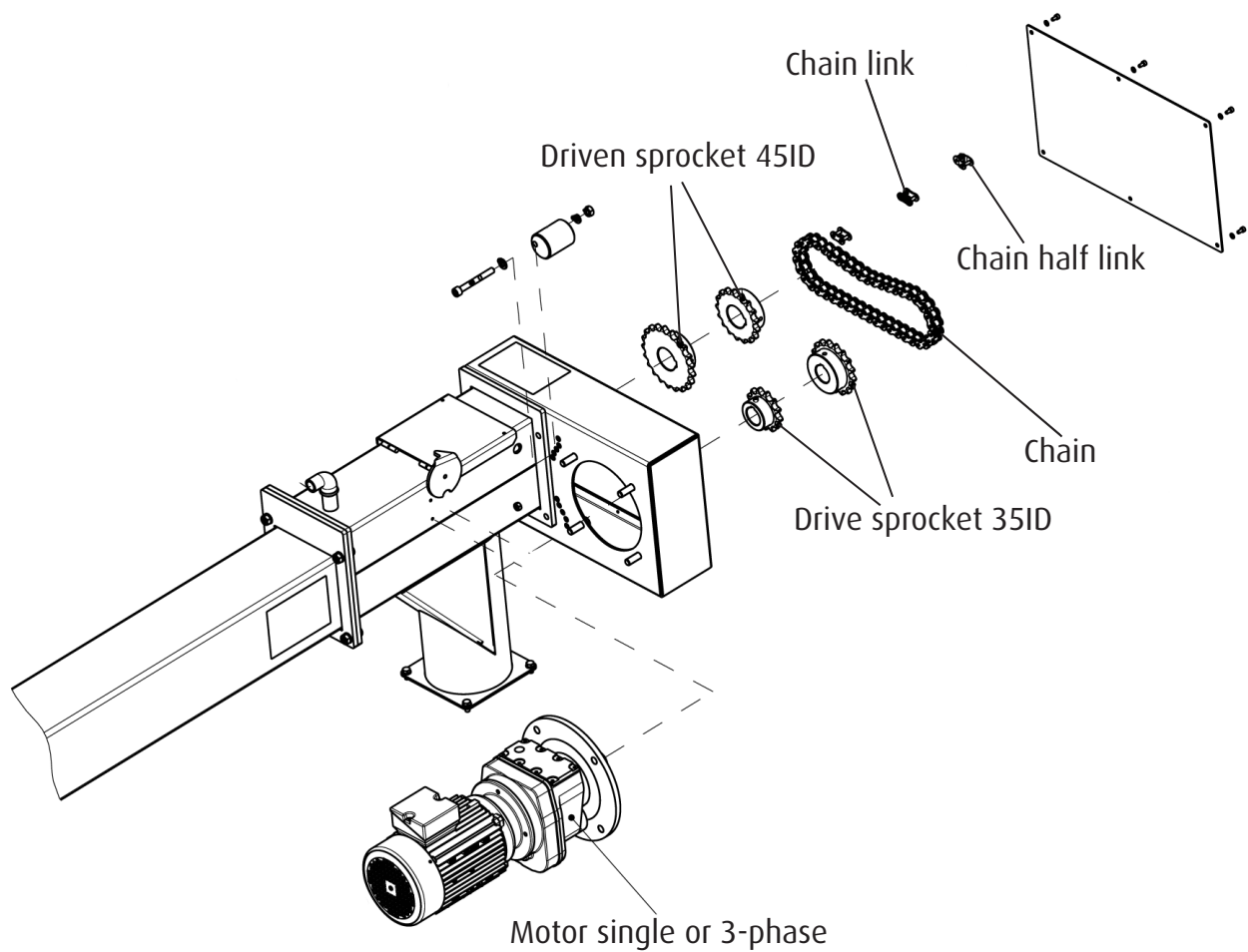
## Sprocket Sets for FRA and PSZ Auger and Drive

The picture below shows the drive sprocket (motor) on the right however in some cases it may be found to be on the left.



Driven sprocket 45ID

Drive sprocket 35ID



### Sprocket Sets for FRA and PSZ Auger and Drive

Drive sprockets 35ID		Driven sprockets 45ID	
Part No:	No. Teeth	Part No:	No. Teeth
HDG33110	13		
HDG33907	17	HDG32537	17
HDG31501	26	HDG32538	21
		HDG32650	30

#### Sprocket combinations: Compact 100 - 200

Boiler model	Fuel type	Auger type	Drive sprocket	Driven sprocket
C100 - 200	Chip	FRA	17	17
C100 - 200	Pellet or Chip	FRA	13	21

#### Sprocket combinations: Compact 25 - 80

Boiler model	Fuel type	Auger type	Drive sprocket	Driven sprocket
C25 - 80	Pellet or Chip	FRA	13	21
C25 - 35*	Pellet	FRA	13	26

\* May use the 13/26 on the C25 - 35 to slow down pellets due to small grate.

**If FRA/PSZ with TFQ**

**TFQ should always be faster even if a metering dome is present.**

**e.g. FRA 13/21 then TFQ 13/17**

**The angle of TFQ also effects the sprocket combination**

**i.e. more angle = faster combination**

**All PSZ's use 13/21 combination.**