

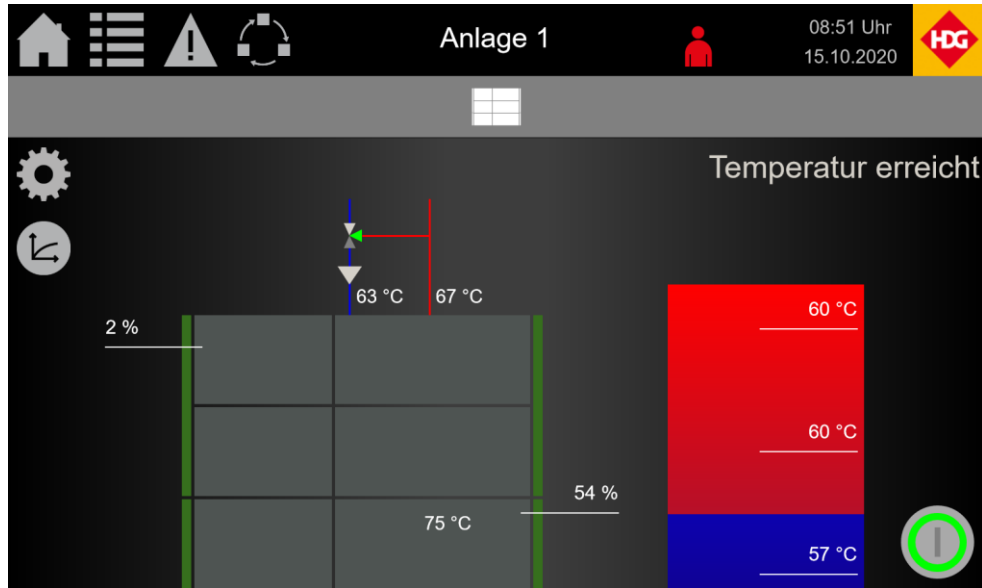
hdg-bavaria.com



HDG Web-Visualization PRO



New: HDG Web-visualization PRO



- **new web server**
for HDG Compact 100-200 and
HDG M300-400
- **Replaces the existing HDG web
visualization**
- **Available now**

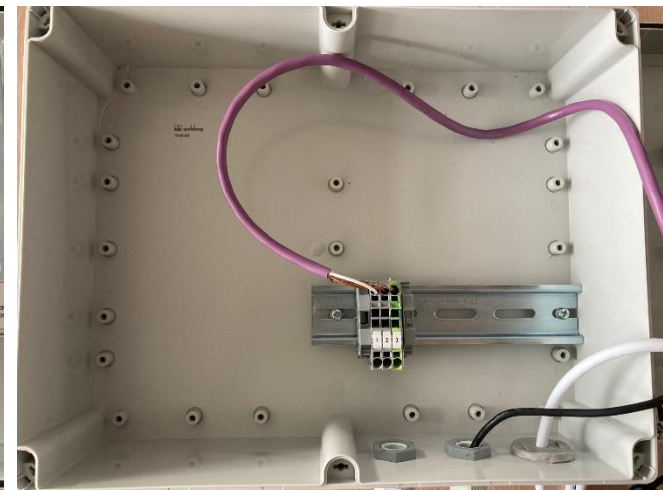


- External wall housing with 7“ touch display
- The data is queried from the PLC via BUS
- The representation on the display corresponds 1: 1 to the online view



Scope of delivery

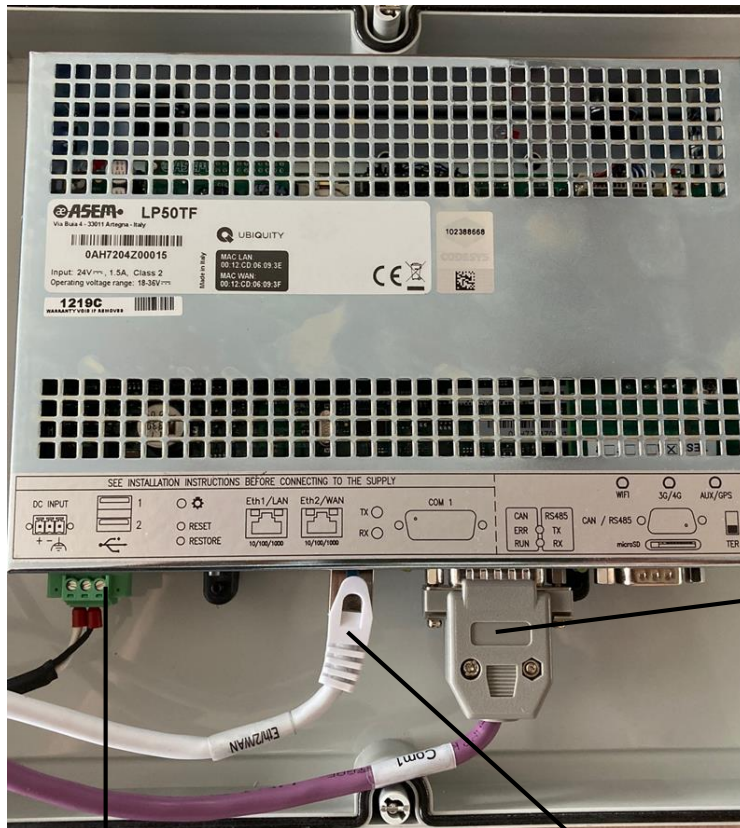
- wall housing
- 7" touch display
- power supply
- network cable
- terminal strip



Connection



- **Connection**
- The connection is made like the old web server. The boiler must be equipped with a SubPrint.

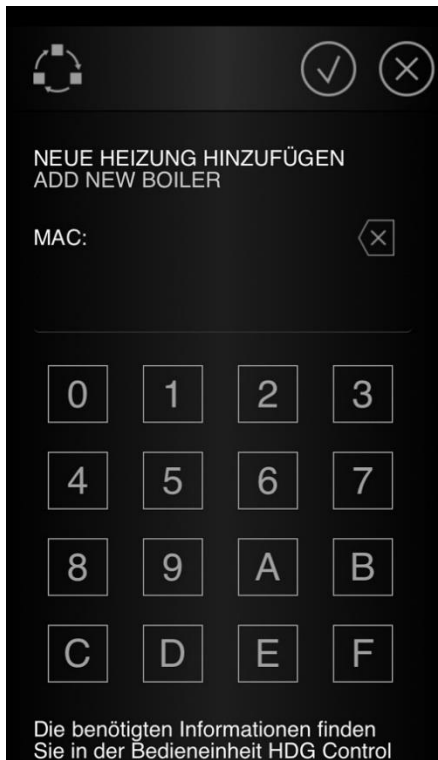


BUS Connection

Power supply

Network
ET2/WAN





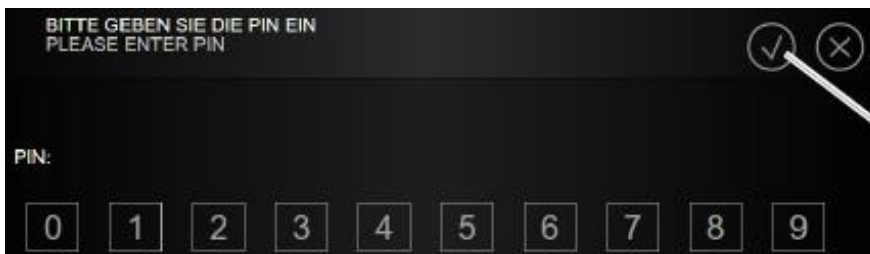
NEUE HEIZUNG HINZUFÜGEN
ADD NEW BOILER

MAC:

0 1 2 3
4 5 6 7
8 9 A B
C D E F

Die benötigten Informationen finden Sie in der Bedieneinheit HDG Control

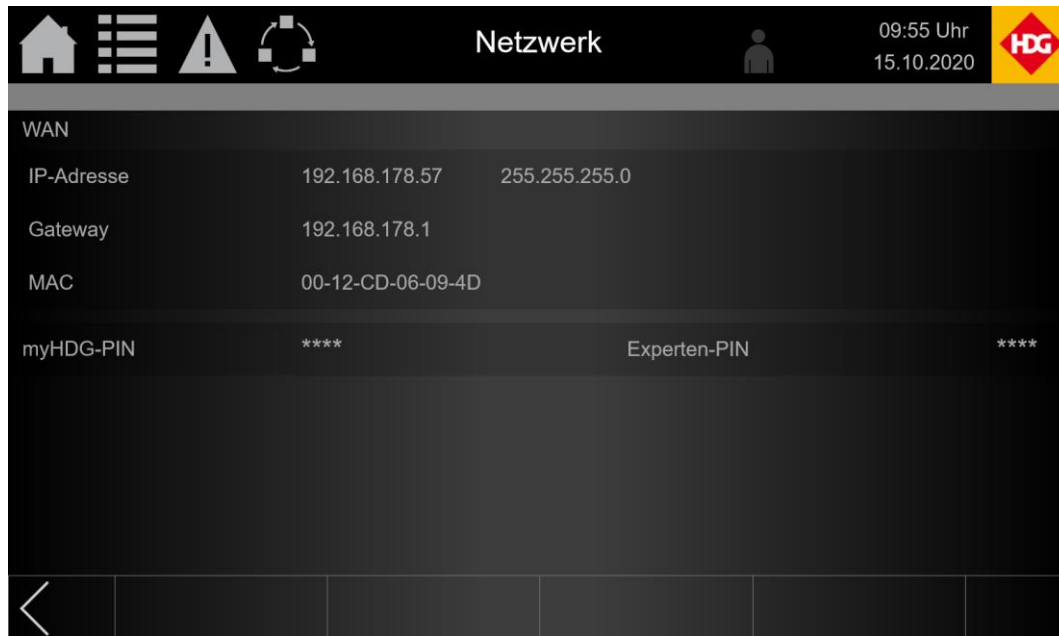
- The new web visualization can be integrated into MyHDG. It is integrated as usual by means of a MAC address
- Operation via Iphone is now possible
- A direct connection via the IP address is not possible
- A PIN must be entered on the web server and MyHDG so that the boiler can be reached



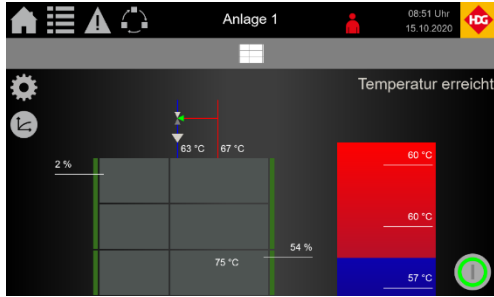
BITTE GEBEN SIE DIE PIN EIN
PLEASE ENTER PIN

PIN:

0 1 2 3 4 5 6 7 8 9



- PIN assignment necessary before MyHDG access
- In order to be able to access via MyHDG, the PIN on the web server must be changed on site. (sub-item network)
- The standard setting "0" does not allow external access.
- The expert PIN enables access via the ExpertNET



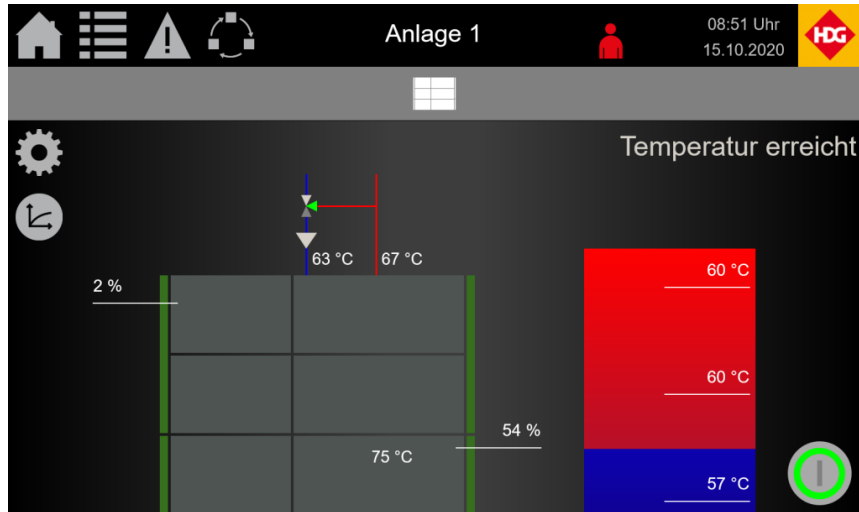
- **The HDG web visualization PRO can also be retrofitted to existing boilers**

- **Upgrade 1 39178** Old web server Interface can still be used without program adjustment
- **Upgrade 2 39179** Old web server Interface can still to be used, with program adjustment (necessary for all boilers before 2015 and if, for example, buffer management has to be operated)
- **New Install 39180** new Interface and program must be adapted



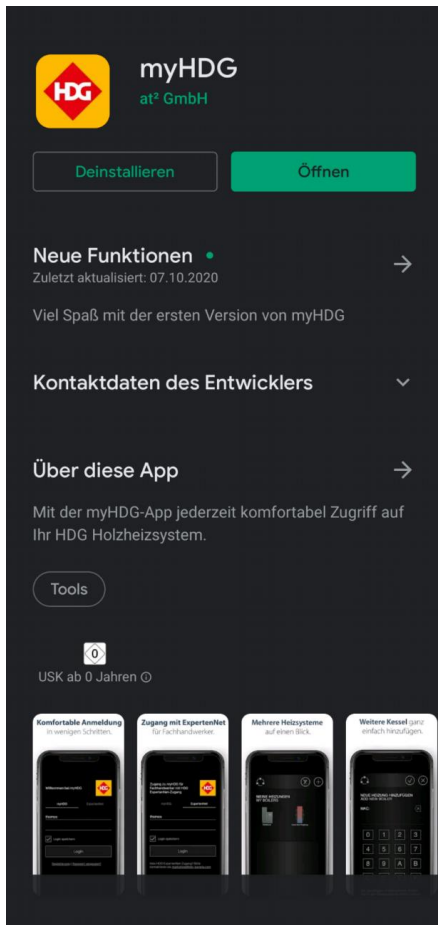
- The old web server was programmed with Flash
- This programming language will no longer be supported by new browsers from 2021
- The old web servers can therefore gradually no longer be reached
- The sending of emails continues

Operation HDG web visualization



- Interface based on WebControl
- Same basic operation
- Same rights groups
- The only restriction: no responsive design

New: HDG App „myHDG“



- **Official, tested app**

The "myHDG" app is available for the two common platforms iOS and Android

- **Easy to find**

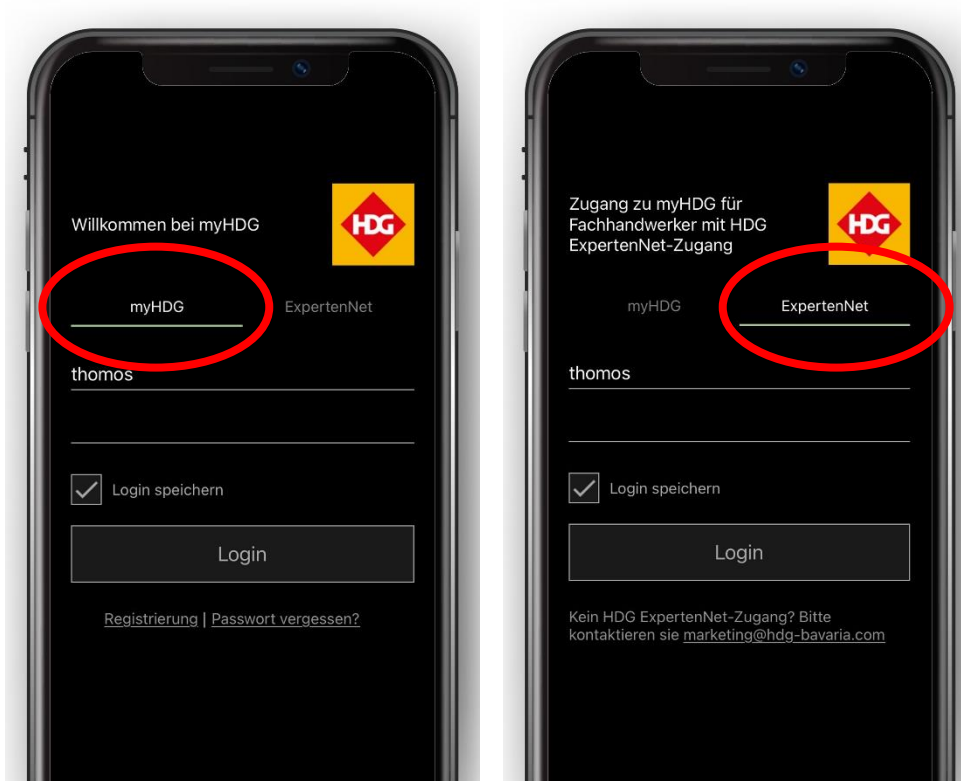
Simply search for “HDG Bavaria” or “myHDG” in the App Store or Google Play. QR codes are added to new publications.

- **Advantage Customers**

simply install the app from the store and you have access to your boiler

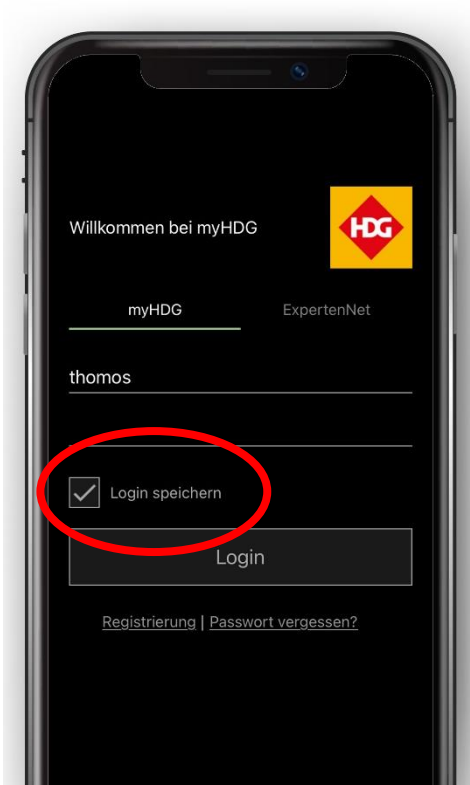
*myHDG App in
Google Play*

Registration and login



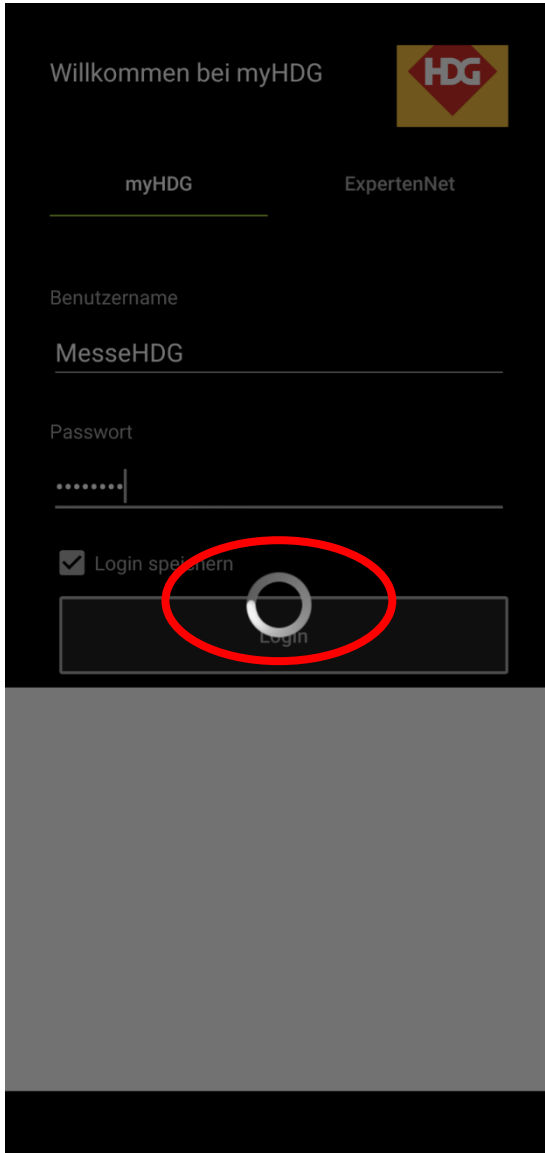
Registration for "normal" myHDG users (left) and with ExpertNet access (right).

- **Easy Registration**
via my.hdg-bavaria.com on the HDG website
- **Simple registration**
Users can easily register with their known myHDG access data
- **Professional registration**
Anyone who uses myHDG via the ExpertNet can also simply log into the app with their ExpertNet access data



Login data can easily be saved.

- **Convenient users**
can save their login data and do not have to enter this again
- **Functions as before!**
After logging in, the HDG WebControl starts with the boiler overview in the app instead of in the browser.
- From the boiler overview the functions correspond 1: 1 to the WebControl
- **The previous functionality of the WebControl is not changed by the app.**
Developments on the WebControl are also automatically displayed in the app



- **"Spinner" during background activity a spinner (turning wheel) now shows background activity in the WebControl. So users know that their click triggered a function and don't click again.**

- **Management of multiple systems**



- Adding new boilers with MAC address and PIN



- **Delivery systems**



- **Status of the boiler**



- **Status of the accumulator**



- Status of the heating circuits



- **Status of the domestic hot water tank**



- **Manage notification settings**



- **Adjust system settings**

