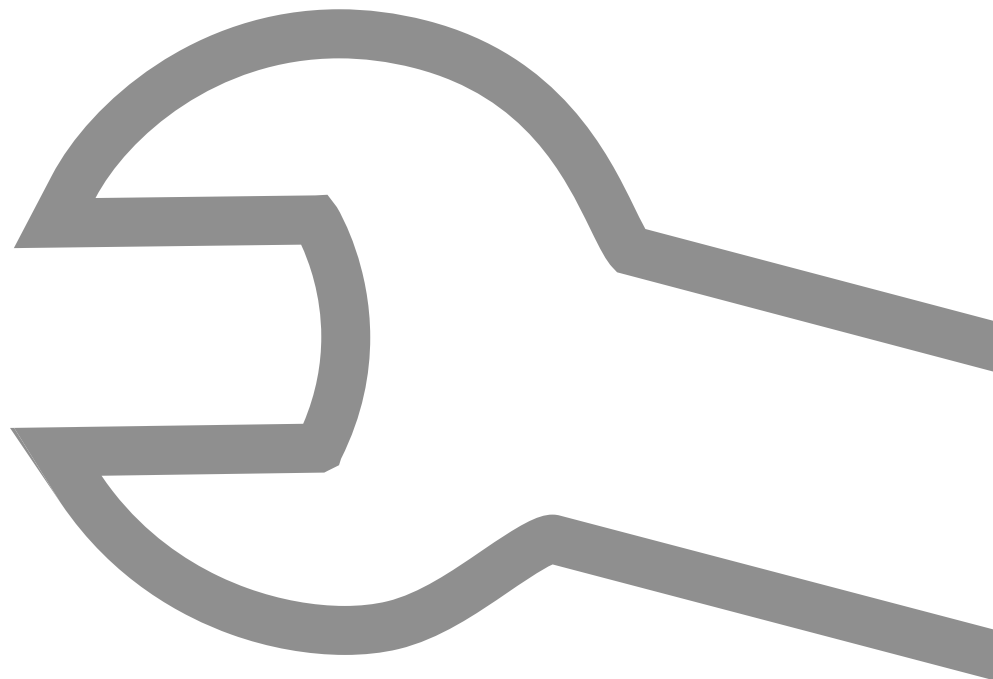


# Cleaning and maintenance log



*Comfortable  
heating. With wood!*

## HDG Compact 100/150/200





---

# Cleaning and maintenance log

## General information

### PLANT OPERATOR

	Plant operator
Name	
Address	
Post code, town	

### HEATING SYSTEM

	Heating system
HDG project number	
Type of boiler	
Rated thermal power	
Year of construction	
Other information	

The cleaning and maintenance log is for recording cleaning and maintenance work during the year. Use the tables on the next page to enter when you performed each task, and after how many operating hours.

In addition to the specified cleaning and maintenance tasks for the boiler, all other safety-relevant components of the entire heating system (such as the thermal safety device) must be regularly serviced by authorised technicians.



### Caution

Compliance with the cleaning and maintenance intervals ensures the safety of the boiler. Failure to comply with them may invalidate any warranty claims made towards HDG.

---

# Contact partners

The following table has space for the addresses and telephone numbers of your most important contact partners.

	Name, address	Tel. no.
<b>HDG sales partner</b>		
<b>Specialist heating company</b>		
<b>Specialist electrical company</b>		
<b>Chimney sweep</b>		

# Cleaning and maintaining the heating system

## GENERAL INFORMATION

To ensure fault-free and safe operation, certain cleaning and maintenance work is necessary. This effort will also help you avoid expensive repairs, provided you observe the recommended intervals.

The cleaning and maintenance work can also be performed by an authorised specialist heating company through a servicing contract.

## SPARE PARTS



Only use original HDG spare parts! You can obtain HDG spare parts from your specialist heating company.

## CLEANING AND MAINTENANCE SCHEDULE



The specified cleaning intervals are a guideline. The intervals may change depending on the quality of the fuel and the power used by the heating system.



Detailed instructions on how to proceed can be found in the operating manual HDG Compact 100/150/200, Chapter „7 Cleaning and maintaining the heating system“.

Observe the warnings and safety instructions in the operating manual.

Intervall	Component
Weekly / as required	<ul style="list-style-type: none"> <li>• Check and clean the grate</li> <li>• Check and empty the ash container</li> <li>• Lubricate the feed system (every 150 operating hours)</li> </ul>
Once a month	<ul style="list-style-type: none"> <li>• Check the drive chains</li> </ul>
Every 6 months	<ul style="list-style-type: none"> <li>• Clean the control unit</li> <li>• Check and clean the cleaning shaft and cleaning turbulators*</li> <li>• Check and clean the ignition fan</li> <li>• Check and clean the lambda probe</li> <li>• Inspect and clean the flue pipe</li> <li>• Check and clean the automatic ash removal system</li> <li>• Check and clean the pressure equalisation hose</li> </ul>
Every 12 months	<ul style="list-style-type: none"> <li>• Check the fill level indicator</li> <li>• Check the plug contacts</li> </ul>
Before every second filling	<ul style="list-style-type: none"> <li>• Inspect the fuel bunker</li> </ul>

Table 1/1 - Cleaning and maintenance schedule

\*At least twice yearly; possibly more often depending on the quality of the fuel.

## FRONT SIDE HDG COMPACT 100

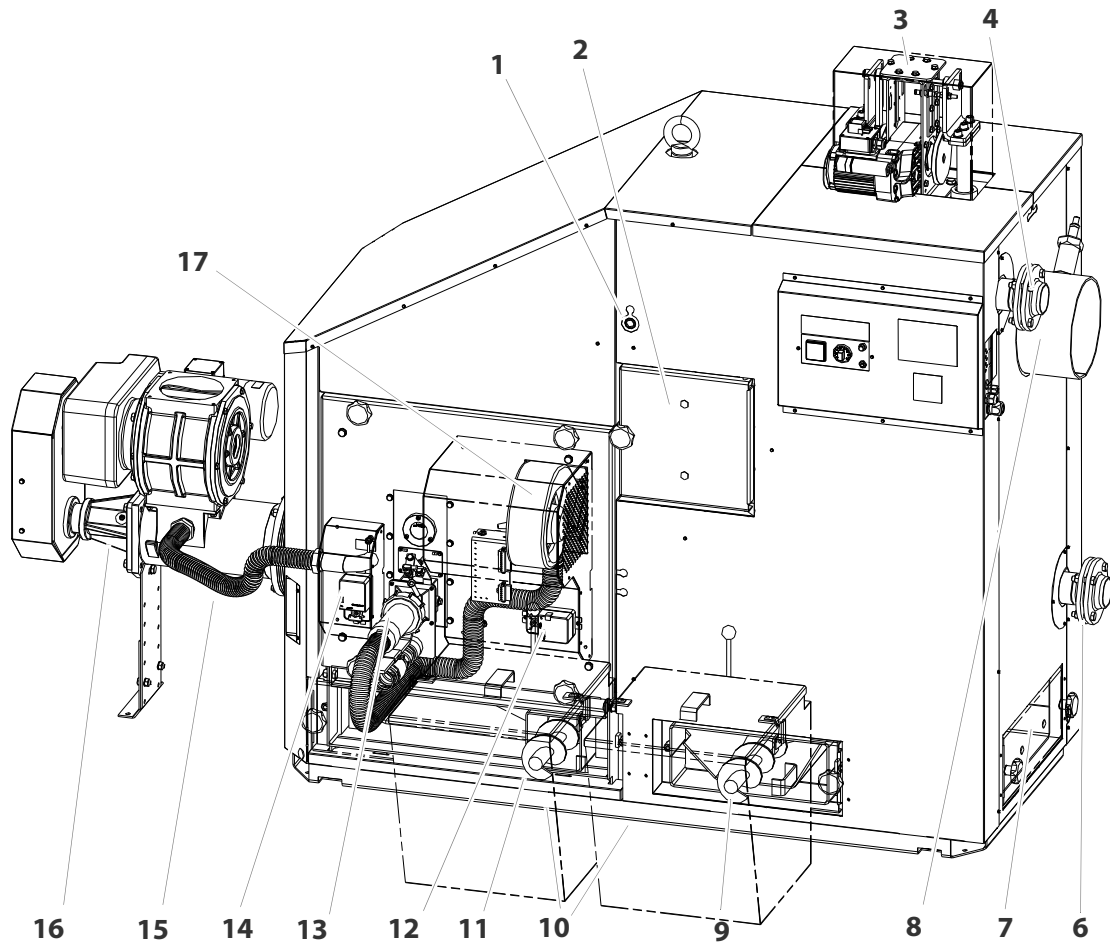


Figure 1/1 - Front side HDG Compact 100

- 1 Combustion chamber temperature sensor
- 2 Combustion chamber inspection door
- 3 Cleaning motor for heat exchanger cleaning
- 4 Flow connection
- 5 Lambda probe
- 6 Return connection
- 7 Cleaning doors
- 8 Flue pipe connection
- 9 Auger for removal of ash from heat exchanger
- 10 Ash container
- 11 Auger for removal of ash from combustion chamber
- 12 Secondary air servo motor
- 13 Ignition fan
- 14 Primary air servo motor
- 15 Pressure equalisation hose
- 16 Feed system TBZ150
- 17 Combustion fan

## BACK SIDE HDG COMPACT 100

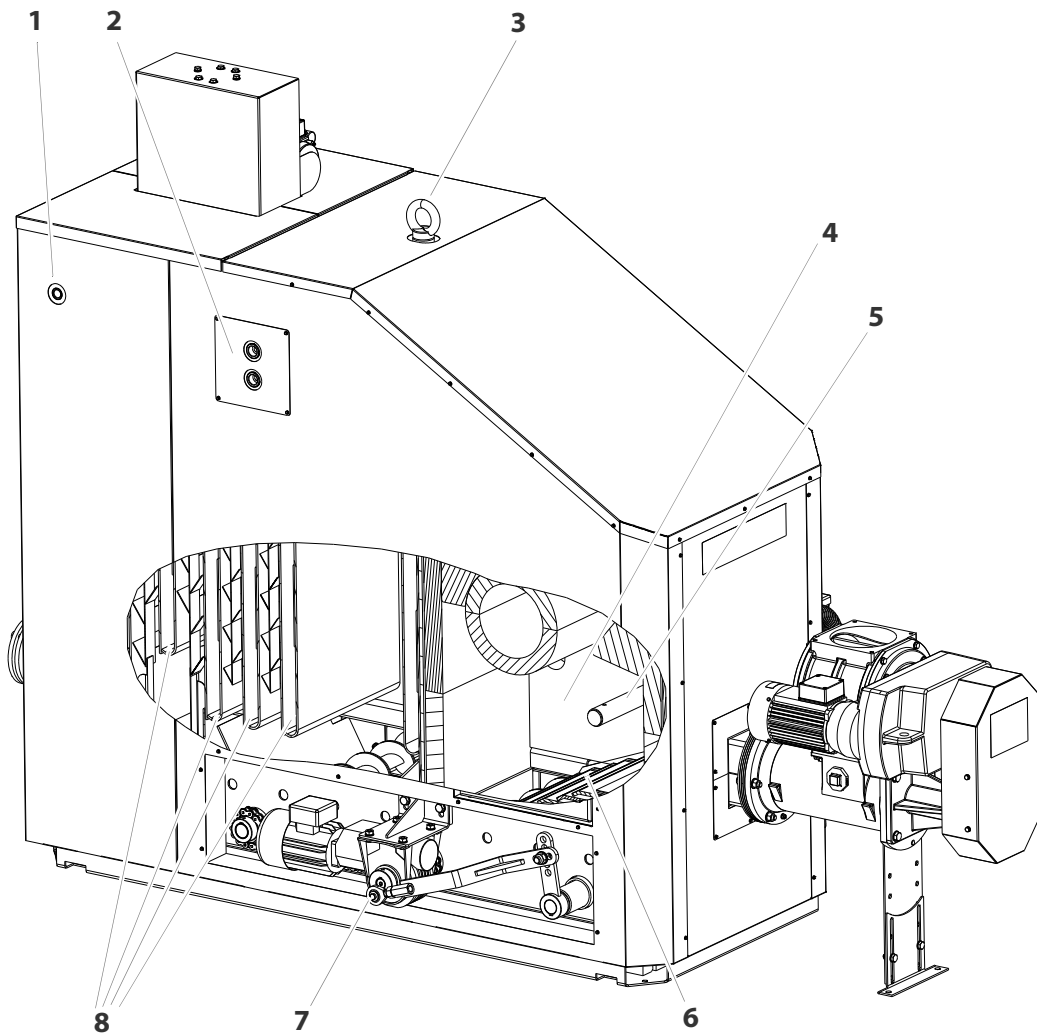


Figure 1/2 - Back side HDG Compact 100

- 1 Immersion sensor connection for thermal safety device
- 2 Connections of thermal safety device
- 3 Eyebolt for crane transport
- 4 Combustion chamber
- 5 Fill level indicator and ignition tube
- 6 Grate
- 7 Ash removal motor
- 8 Heat exchanger surfaces with cleaning turbulators in between

## FRONT SIDE HDG COMPACT 150/200

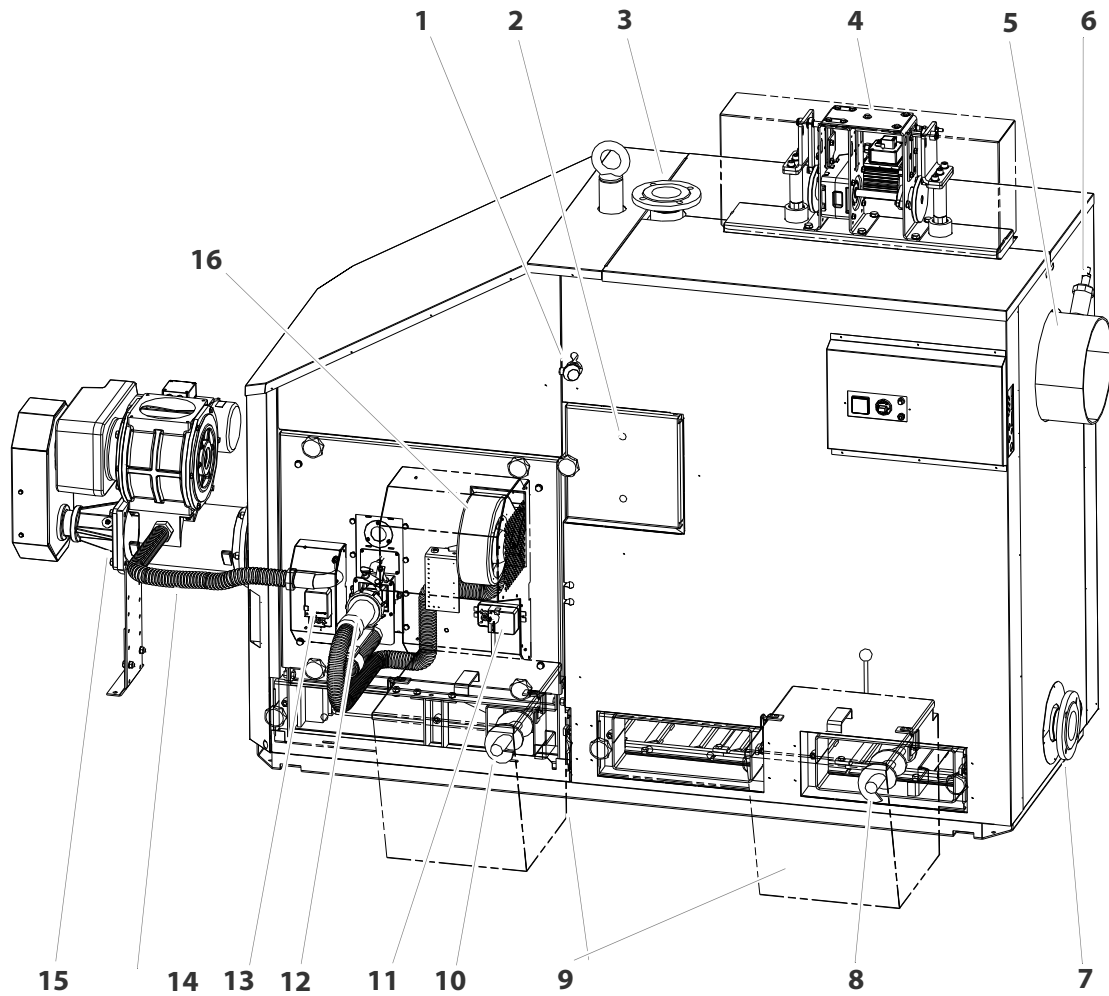


Figure 1/3 - Front side HDG Compact 150/200

- 1 Combustion chamber temperature sensor
- 2 Combustion chamber inspection door
- 3 Flow connection
- 4 Cleaning motor heat exchanger
- 5 Flue pipe connection
- 6 Lambda probe
- 7 Return connection
- 8 Auger for removal of ash from heat exchanger
- 9 Ash container
- 10 Auger for removal of ash from combustion chamber
- 11 Secondary air servo motor
- 12 Ignition fan
- 13 Primary air servo motor
- 14 Pressure equalisation hose
- 15 Feed system TBZ150
- 16 Combustion fan



## BACK SIDE HDG COMPACT 150/200

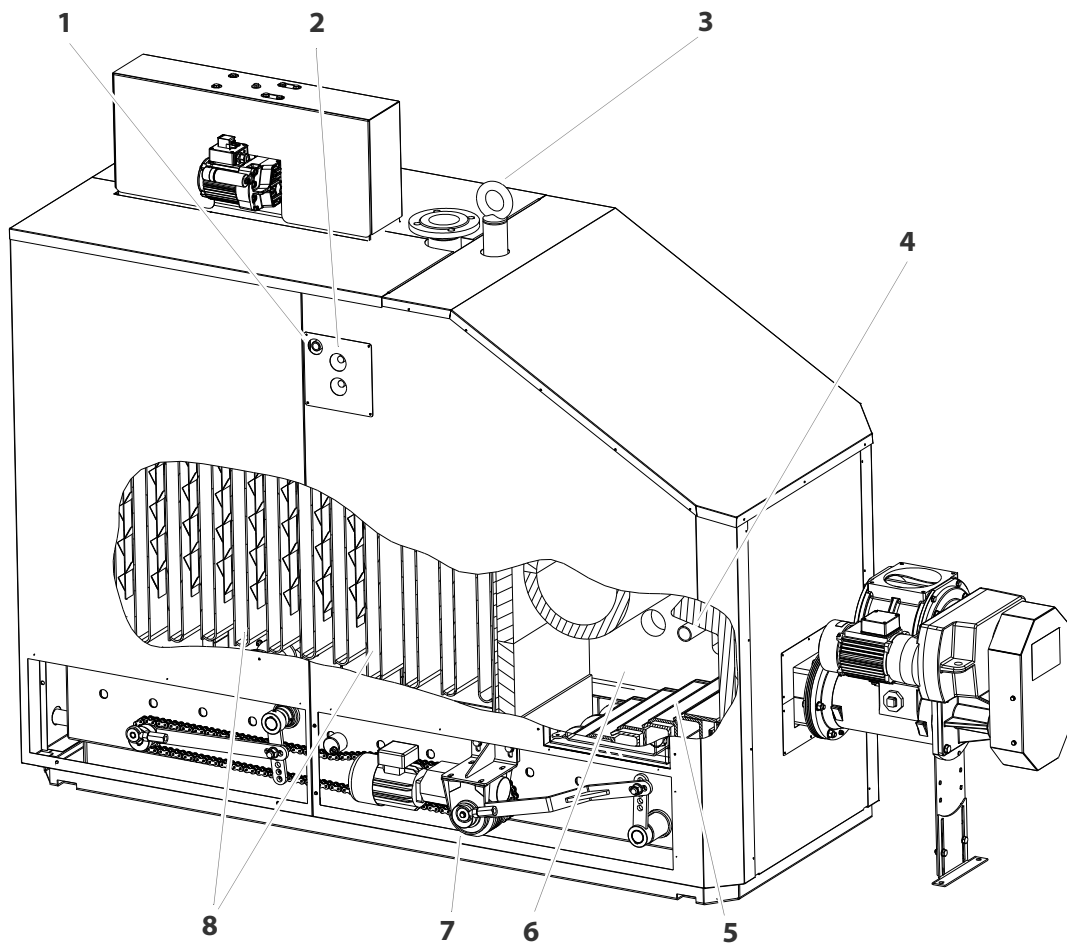


Figure 1/4 - Back side HDG Compact 150/200

- 1 Immersion sensor connection for thermal safety device
- 2 Connections of thermal safety device
- 3 Eyebolt for crane transport
- 4 Fill level indicator and ignition tube
- 5 Grate
- 6 Combustion chamber
- 7 Ash removal motor and gearbox
- 8 Heat exchanger surfaces with cleaning turbulators in between

Year: \_\_\_\_\_

Component		Jan	Feb	Mar	Apr	May	Jun	Jul	Aug	Sep	Oct	Nov	Dec
<b>Weekly / as required</b>													
Check and clean the grate													
Check and empty the ash container													
Lubricate the feed system (every 150 operating hours)													
<b>Once a month</b>													
Check the drive chains	Date												
	Oper. hrs												
<b>Every 6 months</b>													
Clean the control unit	Date												
	Oper. hrs												
Check/clean the cleaning shaft a. cleaning turbulat.	Date												
	Oper. hrs												
Check and clean the ignition fan	Date												
	Oper. hrs												
Check and clean the lambda probe	Date												
	Oper. hrs												
Inspect and clean the flue pipe	Date												
	Oper. hrs												
Check and clean the automatic ash removal system	Date												
	Oper. hrs												
Check and clean the pressure equalisation hose	Date												
	Oper. hrs												
<b>Every 12 months</b>													
Check the fill level indicator	Date												
	Oper. hrs												
Check the plug contacts	Date												
	Oper. hrs												
<b>Before every second filling</b>													
Inspect the fuel bunker	Date												
	Oper. hrs												

**Maintenance corresponding maintenance contract**

Name Enterprise/Technician	Date	Oper. hours	Note	Signature

Year: \_\_\_\_\_

Component		Jan	Feb	Mar	Apr	May	Jun	Jul	Aug	Sep	Oct	Nov	Dec
<b>Weekly / as required</b>													
Check and clean the grate													
Check and empty the ash container													
Lubricate the feed system (every 150 operating hours)													
<b>Once a month</b>													
Check the drive chains	Date												
	Oper. hrs												
<b>Every 6 months</b>													
Clean the control unit	Date												
	Oper. hrs												
Check/clean the cleaning shaft a. cleaning turbulat.	Date												
	Oper. hrs												
Check and clean the ignition fan	Date												
	Oper. hrs												
Check and clean the lambda probe	Date												
	Oper. hrs												
Inspect and clean the flue pipe	Date												
	Oper. hrs												
Check and clean the automatic ash removal system	Date												
	Oper. hrs												
Check and clean the pressure equalisation hose	Date												
	Oper. hrs												
<b>Every 12 months</b>													
Check the fill level indicator	Date												
	Oper. hrs												
Check the plug contacts	Date												
	Oper. hrs												
<b>Before every second filling</b>													
Inspect the fuel bunker	Date												
	Oper. hrs												

**Maintenance corresponding maintenance contract**

Name Enterprise/Technician	Date	Oper. hours	Note	Signature

Year: \_\_\_\_\_

Component		Jan	Feb	Mar	Apr	May	Jun	Jul	Aug	Sep	Oct	Nov	Dec
<b>Weekly / as required</b>													
Check and clean the grate													
Check and empty the ash container													
Lubricate the feed system (every 150 operating hours)													
<b>Once a month</b>													
Check the drive chains	Date												
	Oper. hrs												
<b>Every 6 months</b>													
Clean the control unit	Date												
	Oper. hrs												
Check/clean the cleaning shaft a. cleaning turbulat.	Date												
	Oper. hrs												
Check and clean the ignition fan	Date												
	Oper. hrs												
Check and clean the lambda probe	Date												
	Oper. hrs												
Inspect and clean the flue pipe	Date												
	Oper. hrs												
Check and clean the automatic ash removal system	Date												
	Oper. hrs												
Check and clean the pressure equalisation hose	Date												
	Oper. hrs												
<b>Every 12 months</b>													
Check the fill level indicator	Date												
	Oper. hrs												
Check the plug contacts	Date												
	Oper. hrs												
<b>Before every second filling</b>													
Inspect the fuel bunker	Date												
	Oper. hrs												

**Maintenance corresponding maintenance contract**

Name Enterprise/Technician	Date	Oper. hours	Note	Signature

Year: \_\_\_\_\_

Component		Jan	Feb	Mar	Apr	May	Jun	Jul	Aug	Sep	Oct	Nov	Dec
<b>Weekly / as required</b>													
Check and clean the grate													
Check and empty the ash container													
Lubricate the feed system (every 150 operating hours)													
<b>Once a month</b>													
Check the drive chains	Date												
	Oper. hrs												
<b>Every 6 months</b>													
Clean the control unit	Date												
	Oper. hrs												
Check/clean the cleaning shaft a. cleaning turbulat.	Date												
	Oper. hrs												
Check and clean the ignition fan	Date												
	Oper. hrs												
Check and clean the lambda probe	Date												
	Oper. hrs												
Inspect and clean the flue pipe	Date												
	Oper. hrs												
Check and clean the automatic ash removal system	Date												
	Oper. hrs												
Check and clean the pressure equalisation hose	Date												
	Oper. hrs												
<b>Every 12 months</b>													
Check the fill level indicator	Date												
	Oper. hrs												
Check the plug contacts	Date												
	Oper. hrs												
<b>Before every second filling</b>													
Inspect the fuel bunker	Date												
	Oper. hrs												

**Maintenance corresponding maintenance contract**

Name Enterprise/Technician	Date	Oper. hours	Note	Signature

Year: \_\_\_\_\_

Component		Jan	Feb	Mar	Apr	May	Jun	Jul	Aug	Sep	Oct	Nov	Dec
<b>Weekly / as required</b>													
Check and clean the grate													
Check and empty the ash container													
Lubricate the feed system (every 150 operating hours)													
<b>Once a month</b>													
Check the drive chains	Date												
	Oper. hrs												
<b>Every 6 months</b>													
Clean the control unit	Date												
	Oper. hrs												
Check/clean the cleaning shaft a. cleaning turbulat.	Date												
	Oper. hrs												
Check and clean the ignition fan	Date												
	Oper. hrs												
Check and clean the lambda probe	Date												
	Oper. hrs												
Inspect and clean the flue pipe	Date												
	Oper. hrs												
Check and clean the automatic ash removal system	Date												
	Oper. hrs												
Check and clean the pressure equalisation hose	Date												
	Oper. hrs												
<b>Every 12 months</b>													
Check the fill level indicator	Date												
	Oper. hrs												
Check the plug contacts	Date												
	Oper. hrs												
<b>Before every second filling</b>													
Inspect the fuel bunker	Date												
	Oper. hrs												

**Maintenance corresponding maintenance contract**

Name Enterprise/Technician	Date	Oper. hours	Note	Signature

Year: \_\_\_\_\_

Component		Jan	Feb	Mar	Apr	May	Jun	Jul	Aug	Sep	Oct	Nov	Dec
<b>Weekly / as required</b>													
Check and clean the grate													
Check and empty the ash container													
Lubricate the feed system (every 150 operating hours)													
<b>Once a month</b>													
Check the drive chains	Date												
	Oper. hrs												
<b>Every 6 months</b>													
Clean the control unit	Date												
	Oper. hrs												
Check/clean the cleaning shaft a. cleaning turbulat.	Date												
	Oper. hrs												
Check and clean the ignition fan	Date												
	Oper. hrs												
Check and clean the lambda probe	Date												
	Oper. hrs												
Inspect and clean the flue pipe	Date												
	Oper. hrs												
Check and clean the automatic ash removal system	Date												
	Oper. hrs												
Check and clean the pressure equalisation hose	Date												
	Oper. hrs												
<b>Every 12 months</b>													
Check the fill level indicator	Date												
	Oper. hrs												
Check the plug contacts	Date												
	Oper. hrs												
<b>Before every second filling</b>													
Inspect the fuel bunker	Date												
	Oper. hrs												

**Maintenance corresponding maintenance contract**

Name Enterprise/Technician	Date	Oper. hours	Note	Signature

Year: \_\_\_\_\_

Component		Jan	Feb	Mar	Apr	May	Jun	Jul	Aug	Sep	Oct	Nov	Dec
<b>Weekly / as required</b>													
Check and clean the grate													
Check and empty the ash container													
Lubricate the feed system (every 150 operating hours)													
<b>Once a month</b>													
Check the drive chains	Date												
	Oper. hrs												
<b>Every 6 months</b>													
Clean the control unit	Date												
	Oper. hrs												
Check/clean the cleaning shaft a. cleaning turbulat.	Date												
	Oper. hrs												
Check and clean the ignition fan	Date												
	Oper. hrs												
Check and clean the lambda probe	Date												
	Oper. hrs												
Inspect and clean the flue pipe	Date												
	Oper. hrs												
Check and clean the automatic ash removal system	Date												
	Oper. hrs												
Check and clean the pressure equalisation hose	Date												
	Oper. hrs												
<b>Every 12 months</b>													
Check the fill level indicator	Date												
	Oper. hrs												
Check the plug contacts	Date												
	Oper. hrs												
<b>Before every second filling</b>													
Inspect the fuel bunker	Date												
	Oper. hrs												

**Maintenance corresponding maintenance contract**

Name Enterprise/Technician	Date	Oper. hours	Note	Signature



Year:

Component		Jan	Feb	Mar	Apr	May	Jun	Jul	Aug	Sep	Oct	Nov	Dec
<b>Weekly / as required</b>													
Check and clean the grate													
Check and empty the ash container													
Lubricate the feed system (every 150 operating hours)													
<b>Once a month</b>													
Check the drive chains	Date												
	Oper. hrs												
<b>Every 6 months</b>													
Clean the control unit	Date												
	Oper. hrs												
Check/clean the cleaning shaft a. cleaning turbulat.	Date												
	Oper. hrs												
Check and clean the ignition fan	Date												
	Oper. hrs												
Check and clean the lambda probe	Date												
	Oper. hrs												
Inspect and clean the flue pipe	Date												
	Oper. hrs												
Check and clean the automatic ash removal system	Date												
	Oper. hrs												
Check and clean the pressure equalisation hose	Date												
	Oper. hrs												
<b>Every 12 months</b>													
Check the fill level indicator	Date												
	Oper. hrs												
Check the plug contacts	Date												
	Oper. hrs												
<b>Before every second filling</b>													
Inspect the fuel bunker	Date												
	Oper. hrs												

**Maintenance corresponding maintenance contract**

Name Enterprise/Technician	Date	Oper. hours	Note	Signature

Year: \_\_\_\_\_

Component		Jan	Feb	Mar	Apr	May	Jun	Jul	Aug	Sep	Oct	Nov	Dec
<b>Weekly / as required</b>													
Check and clean the grate													
Check and empty the ash container													
Lubricate the feed system (every 150 operating hours)													
<b>Once a month</b>													
Check the drive chains	Date												
	Oper. hrs												
<b>Every 6 months</b>													
Clean the control unit	Date												
	Oper. hrs												
Check/clean the cleaning shaft a. cleaning turbulat.	Date												
	Oper. hrs												
Check and clean the ignition fan	Date												
	Oper. hrs												
Check and clean the lambda probe	Date												
	Oper. hrs												
Inspect and clean the flue pipe	Date												
	Oper. hrs												
Check and clean the automatic ash removal system	Date												
	Oper. hrs												
Check and clean the pressure equalisation hose	Date												
	Oper. hrs												
<b>Every 12 months</b>													
Check the fill level indicator	Date												
	Oper. hrs												
Check the plug contacts	Date												
	Oper. hrs												
<b>Before every second filling</b>													
Inspect the fuel bunker	Date												
	Oper. hrs												

**Maintenance corresponding maintenance contract**

Name Enterprise/Technician	Date	Oper. hours	Note	Signature

Year: \_\_\_\_\_

Component		Jan	Feb	Mar	Apr	May	Jun	Jul	Aug	Sep	Oct	Nov	Dec
<b>Weekly / as required</b>													
Check and clean the grate													
Check and empty the ash container													
Lubricate the feed system (every 150 operating hours)													
<b>Once a month</b>													
Check the drive chains	Date												
	Oper. hrs												
<b>Every 6 months</b>													
Clean the control unit	Date												
	Oper. hrs												
Check/clean the cleaning shaft a. cleaning turbulat.	Date												
	Oper. hrs												
Check and clean the ignition fan	Date												
	Oper. hrs												
Check and clean the lambda probe	Date												
	Oper. hrs												
Inspect and clean the flue pipe	Date												
	Oper. hrs												
Check and clean the automatic ash removal system	Date												
	Oper. hrs												
Check and clean the pressure equalisation hose	Date												
	Oper. hrs												
<b>Every 12 months</b>													
Check the fill level indicator	Date												
	Oper. hrs												
Check the plug contacts	Date												
	Oper. hrs												
<b>Before every second filling</b>													
Inspect the fuel bunker	Date												
	Oper. hrs												

**Maintenance corresponding maintenance contract**

Name Enterprise/Technician	Date	Oper. hours	Note	Signature

Year: \_\_\_\_\_

Component		Jan	Feb	Mar	Apr	May	Jun	Jul	Aug	Sep	Oct	Nov	Dec
<b>Weekly / as required</b>													
Check and clean the grate													
Check and empty the ash container													
Lubricate the feed system (every 150 operating hours)													
<b>Once a month</b>													
Check the drive chains	Date												
	Oper. hrs												
<b>Every 6 months</b>													
Clean the control unit	Date												
	Oper. hrs												
Check/clean the cleaning shaft a. cleaning turbulat.	Date												
	Oper. hrs												
Check and clean the ignition fan	Date												
	Oper. hrs												
Check and clean the lambda probe	Date												
	Oper. hrs												
Inspect and clean the flue pipe	Date												
	Oper. hrs												
Check and clean the automatic ash removal system	Date												
	Oper. hrs												
Check and clean the pressure equalisation hose	Date												
	Oper. hrs												
<b>Every 12 months</b>													
Check the fill level indicator	Date												
	Oper. hrs												
Check the plug contacts	Date												
	Oper. hrs												
<b>Before every second filling</b>													
Inspect the fuel bunker	Date												
	Oper. hrs												

**Maintenance corresponding maintenance contract**

Name Enterprise/Technician	Date	Oper. hours	Note	Signature

Year: \_\_\_\_\_

Tätigkeit		Jan	Feb	Mär	Apr	Mai	Jun	Jul	Aug	Sep	Okt	Nov	Dez
<b>Wöchentlich / Nach Bedarf</b>													
Stufenrost prüfen und reinigen													
Aschenbehälter prüfen und entleeren													
Beschickung schmieren (alle 150 Betriebsstunden)													
<b>Monatlich</b>													
Antriebsketten kontrollieren	Date												
	Betr.-Std.												
<b>Halbjährlich</b>													
Bedieneinheit reinigen	Date												
	Betr.-Std.												
R.schacht u. Turbulatoren prüfen u. reinigen	Date												
	Betr.-Std.												
Anzündgebläse prüfen und reinigen	Date												
	Betr.-Std.												
Lambda-Sonde prüfen und reinigen	Date												
	Betr.-Std.												
Rauchrohr prüfen und reinigen	Date												
	Betr.-Std.												
Entaschung prüfen und reinigen	Date												
	Betr.-Std.												
Saugzuggebläse prüfen und reinigen	Date												
	Betr.-Std.												
<b>Jährlich</b>													
Abgastemperaturfühler reinigen	Date												
	Betr.-Std.												
Füllstandsmelder prüfen und schmieren	Date												
	Betr.-Std.												
<b>Vor jedem 2. Befüllen</b>													
Brennstoff-Lagerraum prüfen	Date												
	Betr.-Std.												

**Wartung gemäß Wartungsvertrag**

Name Firma/Monteur	Date	Betriebsstd.	Bemerkung	Unterschrift

Year: \_\_\_\_\_

Tätigkeit	Jan	Feb	Mär	Apr	Mai	Jun	Jul	Aug	Sep	Okt	Nov	Dez
<b>Wöchentlich / Nach Bedarf</b>												
Stufenrost prüfen und reinigen												
Aschenbehälter prüfen und entleeren												
Beschickung schmieren (alle 150 Betriebsstunden)												
<b>Monatlich</b>												
Antriebsketten kontrollieren	Date											
	Betr.-Std.											
<b>Halbjährlich</b>												
Bedieneinheit reinigen	Date											
	Betr.-Std.											
R.schacht u. Turbulatoren prüfen u. reinigen	Date											
	Betr.-Std.											
Anzündgebläse prüfen und reinigen	Date											
	Betr.-Std.											
Lambda-Sonde prüfen und reinigen	Date											
	Betr.-Std.											
Rauchrohr prüfen und reinigen	Date											
	Betr.-Std.											
Entaschung prüfen und reinigen	Date											
	Betr.-Std.											
Saugzuggebläse prüfen und reinigen	Date											
	Betr.-Std.											
<b>Jährlich</b>												
Abgastemperaturfühler reinigen	Date											
	Betr.-Std.											
Füllstandsmelder prüfen und schmieren	Date											
	Betr.-Std.											
<b>Vor jedem 2. Befüllen</b>												
Brennstoff-Lagerraum prüfen	Date											
	Betr.-Std.											

**Wartung gemäß Wartungsvertrag**

Name Firma/Monteur	Date	Betriebsstd.	Bemerkung	Unterschrift

Year: \_\_\_\_\_

Tätigkeit		Jan	Feb	Mär	Apr	Mai	Jun	Jul	Aug	Sep	Okt	Nov	Dez
<b>Wöchentlich / Nach Bedarf</b>													
Stufenrost prüfen und reinigen													
Aschenbehälter prüfen und entleeren													
Beschickung schmieren (alle 150 Betriebsstunden)													
<b>Monatlich</b>													
Antriebsketten kontrollieren	Date												
	Betr.-Std.												
<b>Halbjährlich</b>													
Bedieneinheit reinigen	Date												
	Betr.-Std.												
R.schacht u. Turbulatoren prüfen u. reinigen	Date												
	Betr.-Std.												
Anzündgebläse prüfen und reinigen	Date												
	Betr.-Std.												
Lambda-Sonde prüfen und reinigen	Date												
	Betr.-Std.												
Rauchrohr prüfen und reinigen	Date												
	Betr.-Std.												
Entaschung prüfen und reinigen	Date												
	Betr.-Std.												
Saugzuggebläse prüfen und reinigen	Date												
	Betr.-Std.												
<b>Jährlich</b>													
Abgastemperaturfühler reinigen	Date												
	Betr.-Std.												
Füllstandsmelder prüfen und schmieren	Date												
	Betr.-Std.												
<b>Vor jedem 2. Befüllen</b>													
Brennstoff-Lagerraum prüfen	Date												
	Betr.-Std.												

**Wartung gemäß Wartungsvertrag**

Name Firma/Monteur	Date	Betriebsstd.	Bemerkung	Unterschrift

Year: \_\_\_\_\_

Tätigkeit	Jan	Feb	Mär	Apr	Mai	Jun	Jul	Aug	Sep	Okt	Nov	Dez
<b>Wöchentlich / Nach Bedarf</b>												
Stufenrost prüfen und reinigen												
Aschenbehälter prüfen und entleeren												
Beschickung schmieren (alle 150 Betriebsstunden)												
<b>Monatlich</b>												
Antriebsketten kontrollieren	Date											
	Betr.-Std.											
<b>Halbjährlich</b>												
Bedieneinheit reinigen	Date											
	Betr.-Std.											
R.schacht u. Turbulatoren prüfen u. reinigen	Date											
	Betr.-Std.											
Anzündgebläse prüfen und reinigen	Date											
	Betr.-Std.											
Lambda-Sonde prüfen und reinigen	Date											
	Betr.-Std.											
Rauchrohr prüfen und reinigen	Date											
	Betr.-Std.											
Entaschung prüfen und reinigen	Date											
	Betr.-Std.											
Saugzuggebläse prüfen und reinigen	Date											
	Betr.-Std.											
<b>Jährlich</b>												
Abgastemperaturfühler reinigen	Date											
	Betr.-Std.											
Füllstandsmelder prüfen und schmieren	Date											
	Betr.-Std.											
<b>Vor jedem 2. Befüllen</b>												
Brennstoff-Lagerraum prüfen	Date											
	Betr.-Std.											

**Wartung gemäß Wartungsvertrag**

Name Firma/Monteur	Date	Betriebsstd.	Bemerkung	Unterschrift



Year: \_\_\_\_\_

Tätigkeit		Jan	Feb	Mär	Apr	Mai	Jun	Jul	Aug	Sep	Okt	Nov	Dez
<b>Wöchentlich / Nach Bedarf</b>													
Stufenrost prüfen und reinigen													
Aschenbehälter prüfen und entleeren													
Beschickung schmieren (alle 150 Betriebsstunden)													
<b>Monatlich</b>													
Antriebsketten kontrollieren	Date												
	Betr.-Std.												
<b>Halbjährlich</b>													
Bedieneinheit reinigen	Date												
	Betr.-Std.												
R.schacht u. Turbulatoren prüfen u. reinigen	Date												
	Betr.-Std.												
Anzündgebläse prüfen und reinigen	Date												
	Betr.-Std.												
Lambda-Sonde prüfen und reinigen	Date												
	Betr.-Std.												
Rauchrohr prüfen und reinigen	Date												
	Betr.-Std.												
Entaschung prüfen und reinigen	Date												
	Betr.-Std.												
Saugzuggebläse prüfen und reinigen	Date												
	Betr.-Std.												
<b>Jährlich</b>													
Abgastemperaturfühler reinigen	Date												
	Betr.-Std.												
Füllstandsmelder prüfen und schmieren	Date												
	Betr.-Std.												
<b>Vor jedem 2. Befüllen</b>													
Brennstoff-Lagerraum prüfen	Date												
	Betr.-Std.												

**Wartung gemäß Wartungsvertrag**

Name Firma/Monteur	Date	Betriebsstd.	Bemerkung	Unterschrift

Year: \_\_\_\_\_

Component		Jan	Feb	Mar	Apr	May	Jun	Jul	Aug	Sep	Oct	Nov	Dec
<b>Weekly / as required</b>													
Check and clean the grate													
Check and empty the ash container													
Lubricate the feed system (every 150 operating hours)													
<b>Once a month</b>													
Check the drive chains	Date												
	Oper. hrs												
<b>Every 6 months</b>													
Clean the control unit	Date												
	Oper. hrs												
Check/clean the cleaning shaft a. cleaning turbulat.	Date												
	Oper. hrs												
Check and clean the ignition fan	Date												
	Oper. hrs												
Check and clean the lambda probe	Date												
	Oper. hrs												
Inspect and clean the flue pipe	Date												
	Oper. hrs												
Check and clean the automatic ash removal system	Date												
	Oper. hrs												
Check and clean the pressure equalisation hose	Date												
	Oper. hrs												
<b>Every 12 months</b>													
Check the fill level indicator	Date												
	Oper. hrs												
Check the plug contacts	Date												
	Oper. hrs												
<b>Before every second filling</b>													
Inspect the fuel bunker	Date												
	Oper. hrs												

**Maintenance corresponding maintenance contract**

Name Enterprise/Technician	Date	Oper. hours	Note	Signature

Year: \_\_\_\_\_

Component		Jan	Feb	Mar	Apr	May	Jun	Jul	Aug	Sep	Oct	Nov	Dec
<b>Weekly / as required</b>													
Check and clean the grate													
Check and empty the ash container													
Lubricate the feed system (every 150 operating hours)													
<b>Once a month</b>													
Check the drive chains	Date												
	Oper. hrs												
<b>Every 6 months</b>													
Clean the control unit	Date												
	Oper. hrs												
Check/clean the cleaning shaft a. cleaning turbulat.	Date												
	Oper. hrs												
Check and clean the ignition fan	Date												
	Oper. hrs												
Check and clean the lambda probe	Date												
	Oper. hrs												
Inspect and clean the flue pipe	Date												
	Oper. hrs												
Check and clean the automatic ash removal system	Date												
	Oper. hrs												
Check and clean the pressure equalisation hose	Date												
	Oper. hrs												
<b>Every 12 months</b>													
Check the fill level indicator	Date												
	Oper. hrs												
Check the plug contacts	Date												
	Oper. hrs												
<b>Before every second filling</b>													
Inspect the fuel bunker	Date												
	Oper. hrs												

**Maintenance corresponding maintenance contract**

Name Enterprise/Technician	Date	Oper. hours	Note	Signature

Year: \_\_\_\_\_

Component		Jan	Feb	Mar	Apr	May	Jun	Jul	Aug	Sep	Oct	Nov	Dec
<b>Weekly / as required</b>													
Check and clean the grate													
Check and empty the ash container													
Lubricate the feed system (every 150 operating hours)													
<b>Once a month</b>													
Check the drive chains	Date												
	Oper. hrs												
<b>Every 6 months</b>													
Clean the control unit	Date												
	Oper. hrs												
Check/clean the cleaning shaft a. cleaning turbulat.	Date												
	Oper. hrs												
Check and clean the ignition fan	Date												
	Oper. hrs												
Check and clean the lambda probe	Date												
	Oper. hrs												
Inspect and clean the flue pipe	Date												
	Oper. hrs												
Check and clean the automatic ash removal system	Date												
	Oper. hrs												
Check and clean the pressure equalisation hose	Date												
	Oper. hrs												
<b>Every 12 months</b>													
Check the fill level indicator	Date												
	Oper. hrs												
Check the plug contacts	Date												
	Oper. hrs												
<b>Before every second filling</b>													
Inspect the fuel bunker	Date												
	Oper. hrs												

**Maintenance corresponding maintenance contract**

Name Enterprise/Technician	Date	Oper. hours	Note	Signature

Year: \_\_\_\_\_

Tätigkeit		Jan	Feb	Mär	Apr	Mai	Jun	Jul	Aug	Sep	Okt	Nov	Dez
<b>Wöchentlich / Nach Bedarf</b>													
Stufenrost prüfen und reinigen													
Aschenbehälter prüfen und entleeren													
Beschickung schmieren (alle 150 Betriebsstunden)													
<b>Monatlich</b>													
Antriebsketten kontrollieren	Date												
	Betr.-Std.												
<b>Halbjährlich</b>													
Bedieneinheit reinigen	Date												
	Betr.-Std.												
R.schacht u. Turbulatoren prüfen u. reinigen	Date												
	Betr.-Std.												
Anzündgebläse prüfen und reinigen	Date												
	Betr.-Std.												
Lambda-Sonde prüfen und reinigen	Date												
	Betr.-Std.												
Rauchrohr prüfen und reinigen	Date												
	Betr.-Std.												
Entaschung prüfen und reinigen	Date												
	Betr.-Std.												
Saugzuggebläse prüfen und reinigen	Date												
	Betr.-Std.												
<b>Jährlich</b>													
Abgastemperaturfühler reinigen	Date												
	Betr.-Std.												
Füllstandsmelder prüfen und schmieren	Date												
	Betr.-Std.												
<b>Vor jedem 2. Befüllen</b>													
Brennstoff-Lagerraum prüfen	Date												
	Betr.-Std.												

**Wartung gemäß Wartungsvertrag**

Name Firma/Monteur	Date	Betriebsstd.	Bemerkung	Unterschrift

---

NOTES



**HDG Bavaria GmbH**  
Heizsysteme für Holz  
Siemensstraße 22  
D-84323 Massing  
Tel. +49(0)8724/ 897-0  
info@hdg-bavaria.com  
www.hdg-bavaria.com