

Log range

of HDG log burning boilers from Zeroridge

The HDG range of wood log burning boilers from Zeroridge are eco living at its finest. Renowned for the highest quality construction, each of the boilers are gasification units, driving off the volatile gases in the wood and burning it in a secondary combustion chamber to ensure complete combustion of the fuel with minimal waste. All of the boilers burn exceedingly cleanly, meaning you can burn with the peace of mind you are helping the environment in every aspect.

The controls of the boilers are simple and intuitive, providing information on the boiler and heating system at a glance. To make life with your boiler even easier, further options available include weather compensated heating control, automatic ignition, and fuel loading predictions.

- 4 models in the range
- Highest quality German construction
- Suitable for domestic and commercial requirements
- Outputs from 20 kW to 60 kW
- Low emissions
- Low running costs
- MCS and Domestic RHI approved up to 45 kW models
- Automatic ignition option on F Series and Euro
- BSB fuel calculator advising how much fuel to load in boiler based on weather conditions





HDG R Series

The perfect log burning boiler for the smaller home



A range of three boilers perfect for the smaller home. The R Series offers the perfect eco friendly boiler option for people who want to save on their heating bills and who prefer to use a completely sustainable fuel to heat their home, quickly and efficiently. After 25 minutes your boiler will be working at optimum heat output and will continue burning at a nominal output for up to five hours storing the energy for use when required.





The R Series is the latest log burning boiler from the HDG log boiler range. It is classed as an entry level boiler, providing an affordable solution for the smaller domestic property. The HDG R Series is available in three sizes, 20 kW, 25 kW, and 30 kW.

The R Series range takes many of the key features and advanced technology from the larger HDG boilers which, combined with the robust engineering and high quality that are synonymous with HDG, make this boiler stand out in its class. Ideally for use in conjunction with a secondary heat source such as gas or oil.

The front loading fuel chamber is ideal for loading 500mm split logs at waist height, this makes the loading procedure convenient and easy.

- HDG quality boiler at entry level price
- Easy to fill
- Small footprint
- Easy to maintain
- Simple, clear display
- Low emissions
- Low running cost
- MCS and RHI approved



HDG R Series

The perfect log burning boiler for the home

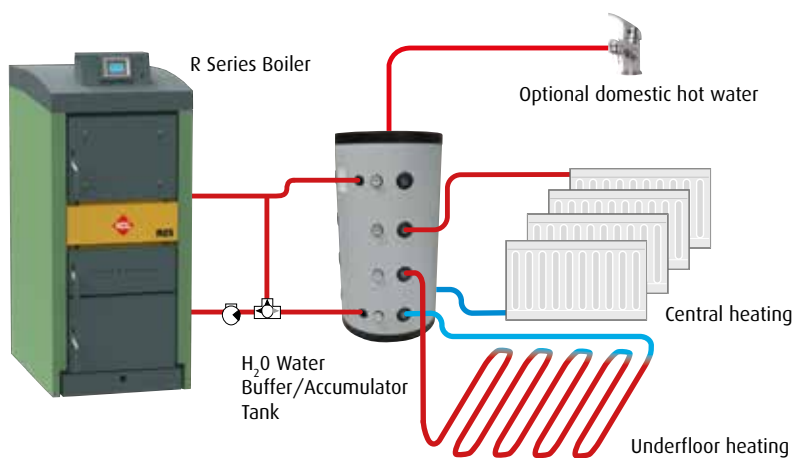


Complete Combustion

The HDG R Series combustion is designed on the principle of down firing gasification of the wood. As the wood in the fuel chamber is heated gases contained within the wood are driven off. These gases pass through the jet into the secondary combustion chamber where they are mixed with additional oxygen for complete combustion of the fuel. Depending on the type of wood being used, the combustion air settings for primary and secondary air are easily altered via a simple to use slider. Gasification is extremely important as this process burns off any volatile gasses ensuring a clean burn which is good for the environment.

Low emissions

The built-in flue gas temperature sensor controls the HDG R Series performance, enabling the boiler output and the combustion to be adjusted to the different operating modes. This simple control assures a high level of operating convenience and reliability whilst simultaneously ensuring low emissions.



Easy to control, simple to operate

The HDG Easy Control optimises combustion efficiencies and emission levels by using information provided by the flue gas & boiler temperature sensors. The Easy Control, also provides accumulator loading and boiler corrosion protection. The HDG R Series is also simple to use. All you have to do is fill up the fuel chamber with 50mm split logs, and occasionally empty the ash. You have full control over when the boiler comes on and off, the temperature, and it even tells you when it needs servicing.



Small footprint

The clever design of the HDG R Series give it a small footprint, meaning it will fit quite easily into any 1.5 x 1.2 meter space in a garage, utility room, or outbuilding. If space is an issue, Zeroridge can also supply the boiler in an Energy cabin suitable for being placed anywhere outside your property.

HDG Construction

The R Series encompasses the best of HDG's construction quality in an entry level boiler. The boiler body comprises of 4-5mm thick steel, welded and reinforced with tension rods for durability. The vertical heat exchangers are kept clean by a manually operated cleaning system. This system is easy to operate and ensures the heat exchanger surfaces are kept clean to maximise heat transfer at all times.

Domestic hot water

The energy created from your boiler is stored in a buffer, accumulator or thermal store. Zeroridge recommend their H₂O storage tanks. They are a robust, reliable and extremely energy efficient heat reservoir. Their purpose is to provide energy storage by storing the heat produced by the R Series boiler. A simple heat transfer allows you use this energy to heat your home. The efficiency of these storage tanks is such that they will provide hot water for many days without need for further burning.



Integration

Even the smallest R Series will provide hot water at mains pressure at the temperature you desire, exactly as any heating boiler would do. It will also fit into your existing hot water system or work as a stand alone system. You can even add other renewable technologies to the system such as a thermal solar.

HDG F Series

Wood Burning 20/25/30/40/45/50 kW



A range of six wood log boilers, the F Series range is ideally suited to domestic properties, where people who want to save on their heating bills and prefer to use a completely sustainable fuel to heat their home quickly and efficiently. One burn will offer many days of stored energy through an accumulator.



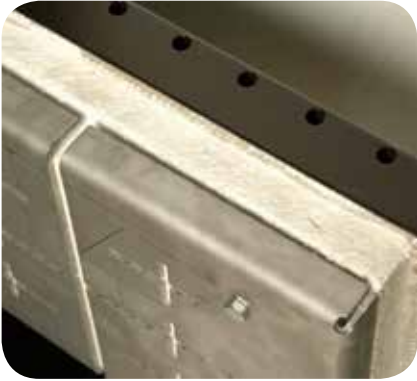
The HDG F Series is a sophisticated and intelligently designed log burning boiler. The large front loading door is ideal for easy loading of the half metre logs, whilst the Lambda control system ensures the boiler can operate effortlessly at over 90% efficiency. The two stage fuel chamber door means you can reload quickly and easily whilst the boiler is still in operation, ensuring that even in the coldest of winters your F Series will easily cope with the demand. The vertical tube heat exchangers are cleaned by a simple external operating handle, making the F Series easy to maintain whilst ensuring maximum efficiency throughout the combustion cycle. Ash removal is also a simple and clean process due to the large integrated ash pan. With a wide range of outputs, the F Series is perfect for homes of most size.

- Waist height fuelling door for easy filling
- All controls and operations from front
- Simple, effective cleaning system
- Space saving dimensions fits in almost any home
- Lambda controlled for highest possible efficiencies
- High quality construction for extended life
- Technically advanced features
- Option of automatic ignition
- MCS and RHI approved
- Option of BSB controller, automatic calculation of fuel load (Recommended)



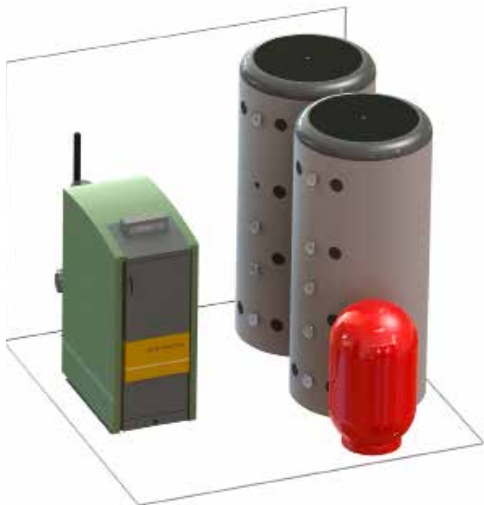
HDG F Series

Wood Burning 20/25/30/40/45/50 kW



HDG Construction

HDG F Series boilers distinguish themselves through their quality build and durability. The boiler itself is constructed of 6mm steel, whilst the fuel chamber features the addition of removable chamfered panels, protecting the boiler plating from the high temperatures required for the complete combustion.



Constant heat output with low emissions

The dedicated motors for the primary and secondary air distribute the air precisely in the combustion zone. The primary air dictates the rate of combustion, modulating the air supply to ensure a constant output. The secondary air ensures the complete combustion of the fuel to maximise the efficiency whilst minimising the emissions of the boiler through the entire burning process.



Simple operation

The operation of the HDG F Series has been designed to make life easy. The large doors, the central control panel, and the cleaning system are all operated from the front, whilst the large 150 or 195 litre fuel chamber allow long intervals between refuelling. For easy re-loading during cold snaps, the heat exchanger features a bypass flap to redirect the combustion gases and ensure none escape into the boiler room.

Easy to clean and maintain

The integrated cleaning turbulators can be operated comfortably from the front or with the optional electric motor automatic version. The turbulators clean the heat exchanger tubes when operated, ensuring that maximum heat transfer efficiency is maintained. A heat exchanger bypass flap allows for reloading whilst operational.

Lambda control

The Lambda control 1 plus is a microprocessor that controls the combustion and output of the F Series. It ensures high efficiency along with low fuel consumption and emissions. The Lambda control can be fitted with optional Automatic ignition, fuel loading, immersion sensor and outdoor temperature sensor making this an extremely powerful addition to the F Series.



Did you know?
 An HDG log boiler keeps Valli the elephant warm and with plenty of hot water via her heated waterfall, at her home in Carmarthen, Wales.

Large ash chamber

The integrated ash pan is located under the combustion chamber at the base of the F Series. When emptying the ash it can be simply pulled out, allowing the ash to be cleaned out without spillage.

HDG Euro

Wood Burning 30/40/45/50 kW



The HDG Euro is a powerful mid sized boiler, burning a whole range of wood types. More importantly it is highly efficient and very cheap to run. Once burning is completed, the air flaps close and the flue fan blower switches off. This prevents the flue from cooling down the boiler. The remaining charcoal is intentionally preserved for subsequent lighting.





The HDG Euro has a reputation for quality unlike any other. Its specially designed grate, combined with a 10mm thick steel fuel chamber make it ideal for a wide range of fuels including wood logs, chips, carpentry off cuts, and briquettes. This flexibility has made it an extremely popular choice in agriculture and forestry, commercial businesses and larger private households, especially for those who have access to woodland or carpentry waste.

The top loading door featuring integrated pneumatic arm makes the boiler quick and simple to load, whilst the fixed charcoals left at the end of each combustion cycle make lighting the boiler effortless.

The large, 220 litre fuel chamber is ideal for easy loading of half metre logs, whilst the Lambda control system ensures the boiler operates effortlessly at over 90% efficiency, making the boiler a powerful workhorse for mid-sized heating requirements.

- Easy top loading pneumatic fuelling hatch
- Suitable for a wide variety of fuels
- Low emissions
- All controls and operations from front
- Lambda controlled for highest possible efficiencies
- High quality construction for extended life
- Technically advance features
- Option of automatic ignition
- MCS and RHI approved
- Option of BSB controller, automatic calculation of fuel load (Recommended)



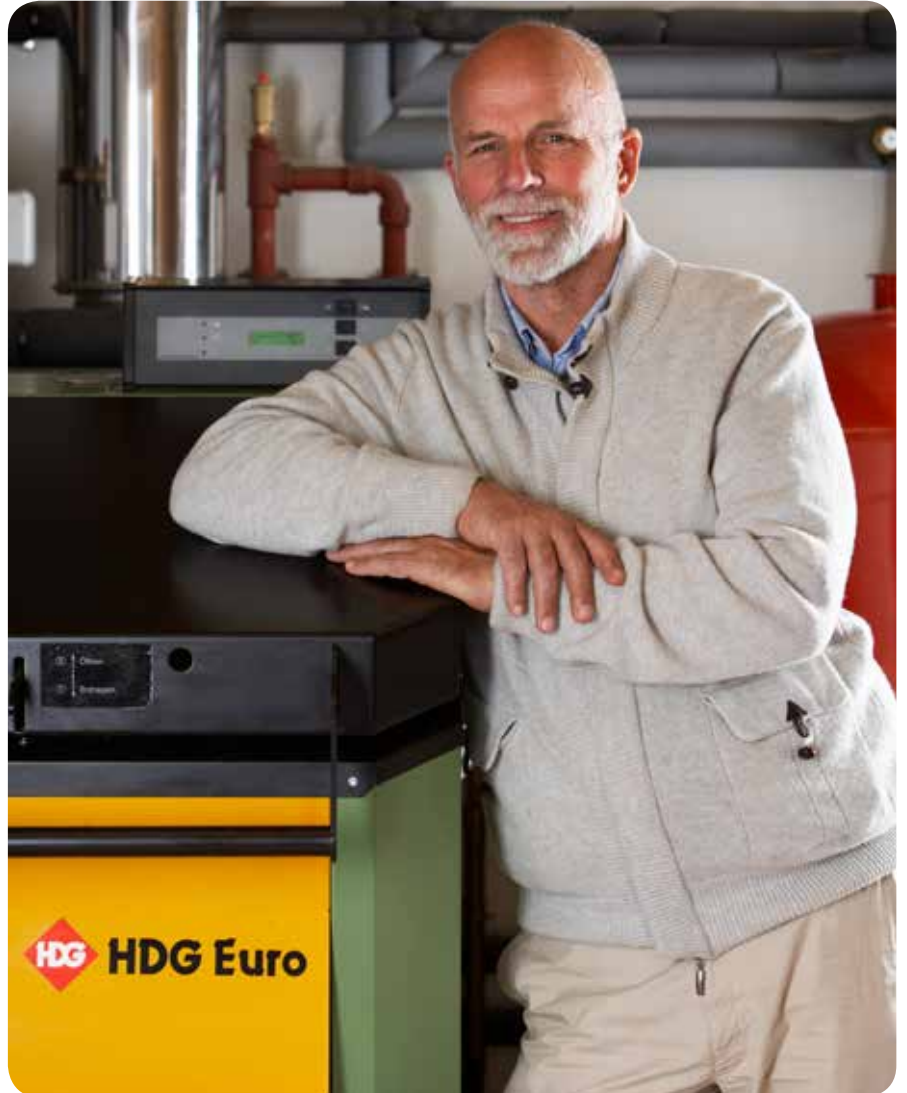
HDG Euro

Wood Burning 30/40/45/50 kW



HDG Construction

No log boiler has the reputation for sheer build quality quite like the HDG Euro. The boiler is constructed of 10mm in the fuel chamber for the highest durability. For added longevity when burning wood waste, chips, shavings or briquettes, the internal surfaces of the fuel chamber can include a fuel scale liner. From the outset, the HDG Euro has been designed to be a heating workhorse and with over 13,000 boilers installed in Europe, its credentials are proven.



The power to heat your home or your business

The HDG Euro from Zeroridge is an ideal wood burning boiler for the home or business. With a range of heat outputs and large wood log capacity it provides hot water and heat with the minimum of fuss.



Did you know?

An HDG Euro is used to make Wallace and Gromitt favourite cheese - Stinking Bishop, made by Charles Martell & Son in rural Gloucestershire.



Easy to light

Once burning is completed, the air flaps close and the flue fan blower switches off. This prevents the flue from cooling the boiler down, whilst the remaining charcoal is intentionally preserved to make the next lighting of the boiler quick and easy. To relight the next day, it needs a few pieces of wood, a few crumpled pieces of newspaper, and a match. Within minutes the boiler is running and producing heat to the accumulator.



Reliable and robust

The design of the HDG Euro grate allows the use of a wide range of different fuels. The innovative construction and robustly manufactured burner nozzle allows - together with the secondary combustion chamber - the optimum after-burning of flue gases.

At the end of the burning cycle, the air flaps close and the fan switches off; therefore the chimney draft cannot cool the boiler down. Unburned charcoal is intentionally preserved after each burn, this makes re-lighting a simple operation as the charcoal is used instead of kindling to easily light.



Choice of fuels

The innovative constructed grate allows for the use of a wide variety of fuels including wood logs, chips, shavings, carpentry off cuts, and briquettes, whilst maintaining the high degree of efficiency that gasifying combustion brings. Its versatility has made it a popular choice for agriculture and forestry uses, commercial businesses and larger private households.



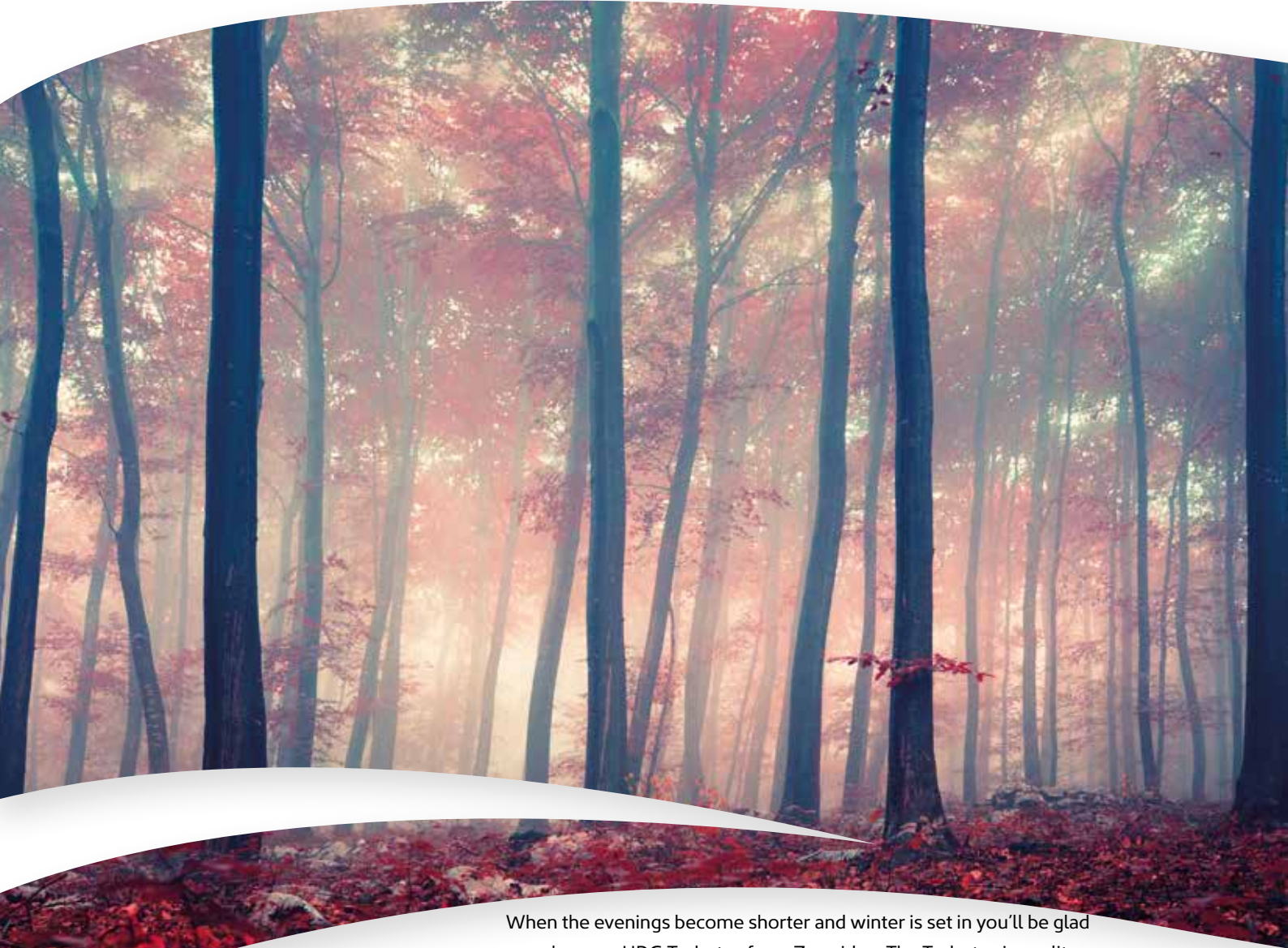
Convenient refilling with pneumatic door

The large fuel chamber of 220 litres is tapered to make it easy to fill with log wood and dry bulk fuel. It will offer hours of burning allowing storage by way of an accumulator. In addition, the fuelling chamber hatch is easy to open due to the integrated pneumatic arm.

Did you know?
Over 13,000 HDG Euro's have been installed since its launch over a decade ago. With its highly engineered construction, and advanced control, it's easy to see why this boiler is so popular.

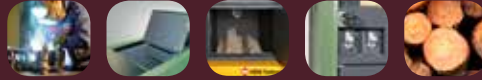
HDG Turbotec

Log burning boiler 50/60 kW



When the evenings become shorter and winter is set in you'll be glad you chose an HDG Turbotec from Zeroridge. The Turbotec is quality personified, exceptional engineering and advanced technology offer superb heating results that will last year after year.

The HDG Turbotec is ideally suited for burning one metre long logs. This saves time and work - during both the preparation of wood and the operation of the heating system. That is why this is the ideal log wood boiler for large domestic and commercial businesses.



The HDG Turbotec 50-60 is a powerful down firing gasification boiler. It is designed for larger homes and commercial establishments that require a reliable, quality boiler system for their heating and hot water needs. The build quality and engineering of the Turbotec is exceptional and includes 6mm thick steel plate for durability and longevity. As with all HDG boilers, the Turbotec benefits from advanced technology to give the highest combustion efficiencies. Key to the Turbotec is its 340 litre fuel chamber, the largest in its class and offering masses of energy from just a single fuelling. It will produce approximately 382 kWh from softwood and 489 kWh from hard wood per fuelling.

- Lambda controlled for highest possible efficiencies
- Large 340 litre fuel chamber suitable for higher heat loads
- All controls and operations from front
- Fuel chamber suitable for one metre length logs
- Easy to fill waist height door
- Option of top fuelling door for easy loading of waste wood and off cuts
- High quality construction for extended life
- RHI approved
- Option of BSB controller, automatic calculation of fuel load (Recommended)



HDG Turbotec

Log burning boiler 50/60 kW



HDG construction

HDG boilers distinguish themselves through their quality engineering and the HDG Turbotec is no exception. The construction starts with quality materials, the boiler being manufactured from 4-6mm powder coated steel with vital areas further protected from the high combustion temperatures. The fuelling chamber on the Turbotec comes complete with removable panels that protect the boiler from the high temperatures of combustion and from corrosive elements.

Did you know?

The highest quality engineering and construction isn't new to HDG. An HDG Type 65 log boiler, a distant relative of the current log boiler range, is still happily providing heat and hot water to a family in Hampshire, over 30 years after it was installed.



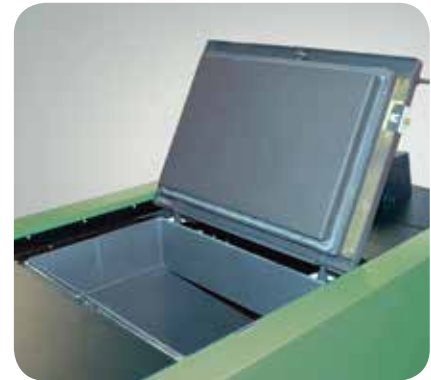
Easy to Operate

The operation of the HDG Turbotec is performed from the front, with the option of a top loading hatch for smaller fuel loading. The large doors, the control elements for the control system as well as the flue bypass damper are all centrally positioned. The large fuelling chamber, a huge 340 litres, allows very long intervals between refuelling whilst the fuel chamber door opens out over 100 degrees to make the operation of loading the boiler with one metre length logs simple.



Quick to Clean

The HDG Turbotec can be cleaned quickly and efficiently via two large access hatches at the rear and base of the boiler and without the need to disassemble any of the boiler housing.



Lambda controlled combustion

For the very highest in combustion efficiencies throughout the burn cycle, the HDG Turbotec incorporates a Lambda controller. The controller constantly monitors the combustion values through the oxygen and flue gas sensor. These values are instantly evaluated and the primary and secondary air flaps precisely adjusted to ensure complete combustion of the fuel, even in variable conditions. BSB fuel loading and outdoor temperature sensor are some of the available options.



Powerful and convenient

Even with its huge wood chamber the HDG Turbotec still offers a high level of convenience and space saving construction. The combustion system and large fuelling chamber dimensioning contribute to extended refuelling periods

Simple ash removal

To facilitate transport of the ash, the boiler has an integrated ash box, which can simply be slid into the lower boiler housing when not in use.



Constant heat output with low emissions

Located on the front of the boiler, the servo motors for the primary and secondary air distribute the air precisely in the combustion zone. The primary air dictates the rate of combustion, modulating the air supply to ensure a constant output. The secondary air ensures the complete combustion of the fuel to maximise the efficiency whilst minimising the emissions of the boiler through the entire burning process.

